



Addicks-Tanner Connector Trail and Tanner Sidewalk Trail

February 14, 2015

Squeaky Wheel Contacts:

Person	Phone	Email	Resident
Keith Roebuck	713-304-5740	K.Roebuck@shell.com	Twin Lakes
Bryan Dotson	281-961-6116	bryan.dotson@live.com	LOEN
Mark Durka	713-856-9978	mdurka@aol.com	LOE
Gregg Nady	832-337-1283	gnady@sbcglobal.net	Other

Proposed Addicks-Tanner Trails

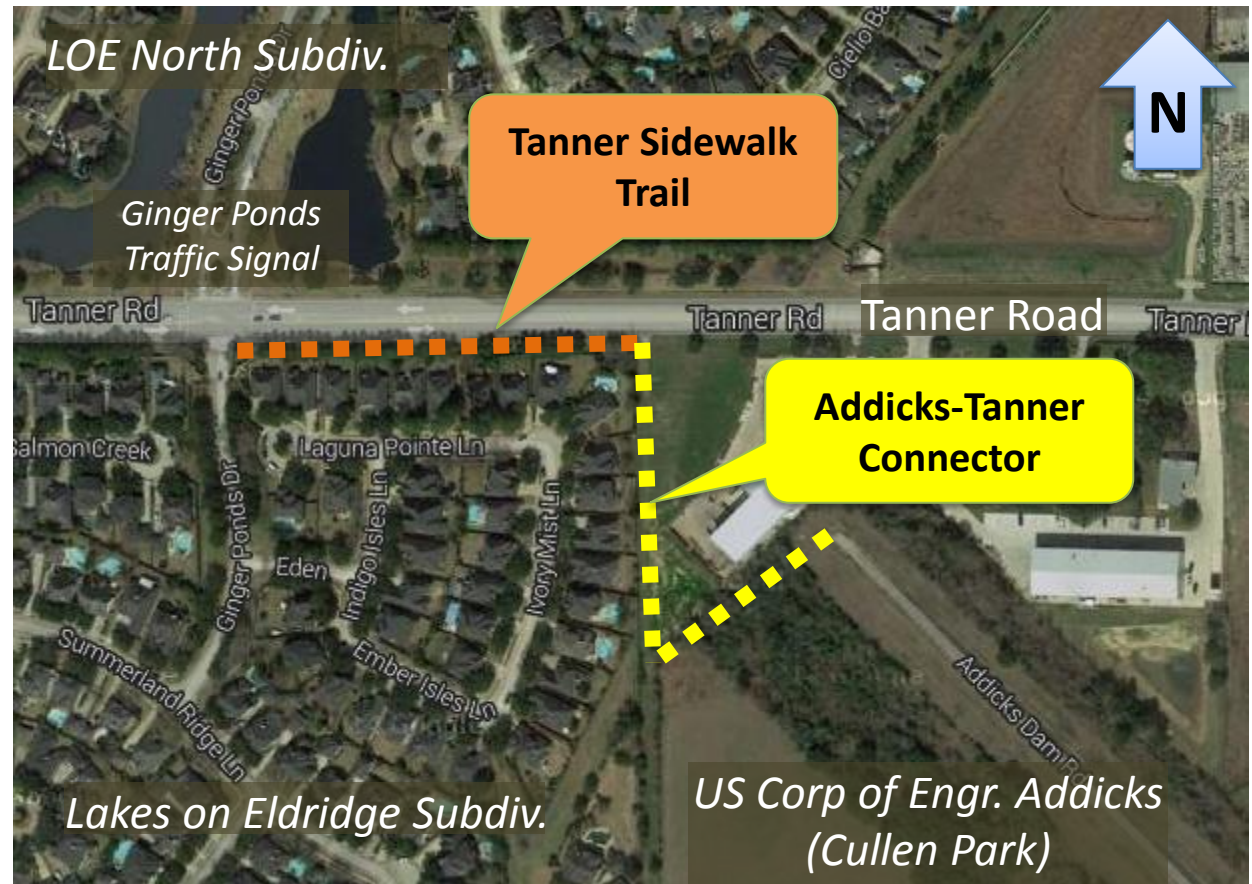


Addicks-Tanner Connector

- 1000' overall length.
- Harris County Precinct 4 Parks will design in 2015. Long-lead time expected for Corps of Engineers permit.

Tanner Sidewalk Trail

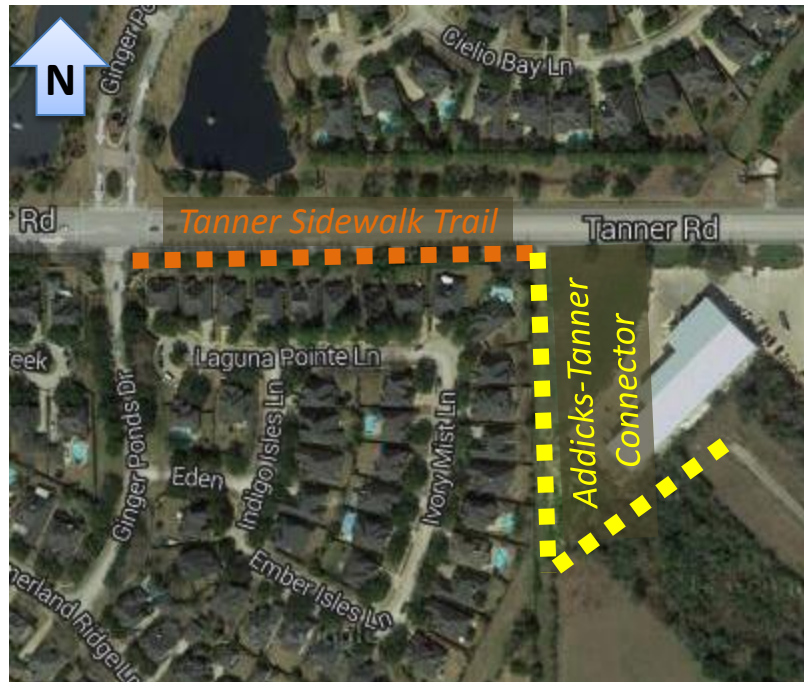
- 700' overall length.
- Design funded jointly by MUD 341 and MUD 370.



Access Enabled by Addicks-Tanner Trails



- Concrete top of spillway (“Addicks Dam Road”) to Clay Road. Total 3.6 miles round trip on paved surface from Ginger Ponds intersection to Clay Road.
- Gravel on the top of the dam south of Clay to shared use path at Chatterton:
 - Lakes, paths and wilderness in Cullen Park.
 - Connection east to Westview bike lane.
 - Connection west to Dairy Ashford bike lane. Current amenities include trail under I-10 to Terry Hershey Park and trail to Addicks Park and Ride.



Proposed Addicks-Tanner Connector

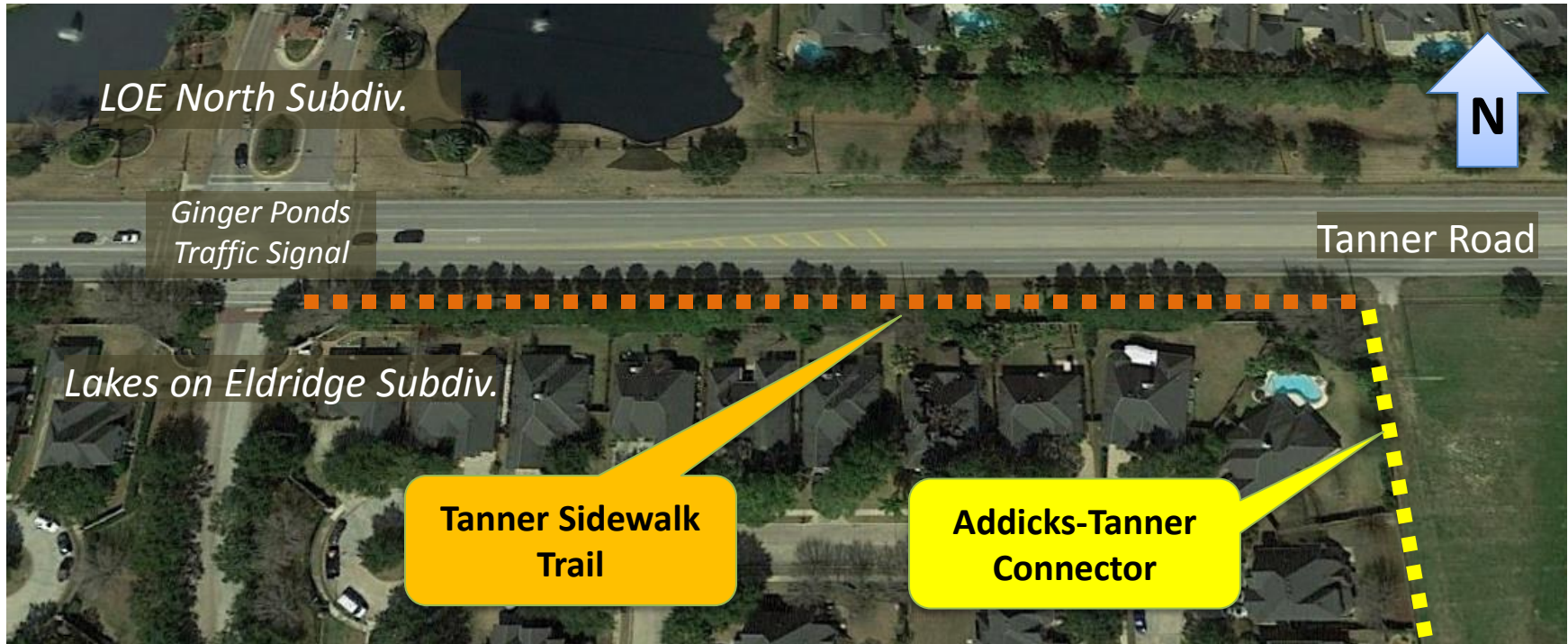


- About 1000' overall length.
- Harris County Precinct 4 Parks will design, fund and build contingent on continued community support.
- On Corps of Engineers land, from toe of spillway to western corner. On private property, along the eastern edge of LOE.
- Will tie to proposed Tanner sidewalk trail from Ginger Ponds Drive traffic light, providing access to LOE and LOEN.



Note: Modification to gates at Clay Road is an independent project.

Proposed Tanner Sidewalk Trail



The Tanner Sidewalk Trail will provide access to the Addicks-Tanner Connector from Lakes on Eldridge (LOE) and Lakes on Eldridge North (LOEN) subdivisions via Ginger Ponds traffic signal. Approximately 700' length and located primarily on Harris County ROW (road side of power poles), this trail will be funded by MUD 341 and 370.